



*Case History*

# CONSERVATIVE DISMANTLING



# CONSERVATIVE DISMANTLING

BBM Service provides **turn-key logistics engineering projects**, including conservative dismantling. This includes:

- Activities' planning and management
- Lifting equipment and transport organization
- Potential preliminary engineering for line optimization
- Potential reassembly and line re-start

## OUR STRENGTHS

### TURN-KEY SERVICE

BBM will look after all the stages autonomously

### GUARANTEE

of quality, service and activity management

### SHORT TIME AND SURE COSTS

Precise time planning





## CASE HISTORY: CAMPARI

In December 2019, BBM Service carried out conservative dismantling for **Campari's Group** plant. The process involved seven steps:



**On-site inspection** before dismantling

Intervention **presentation**

Intervention **timing presentation**

**Machinery** dismantling

Building of **transport cases**

**Loads** for transport

**End** of the intervention

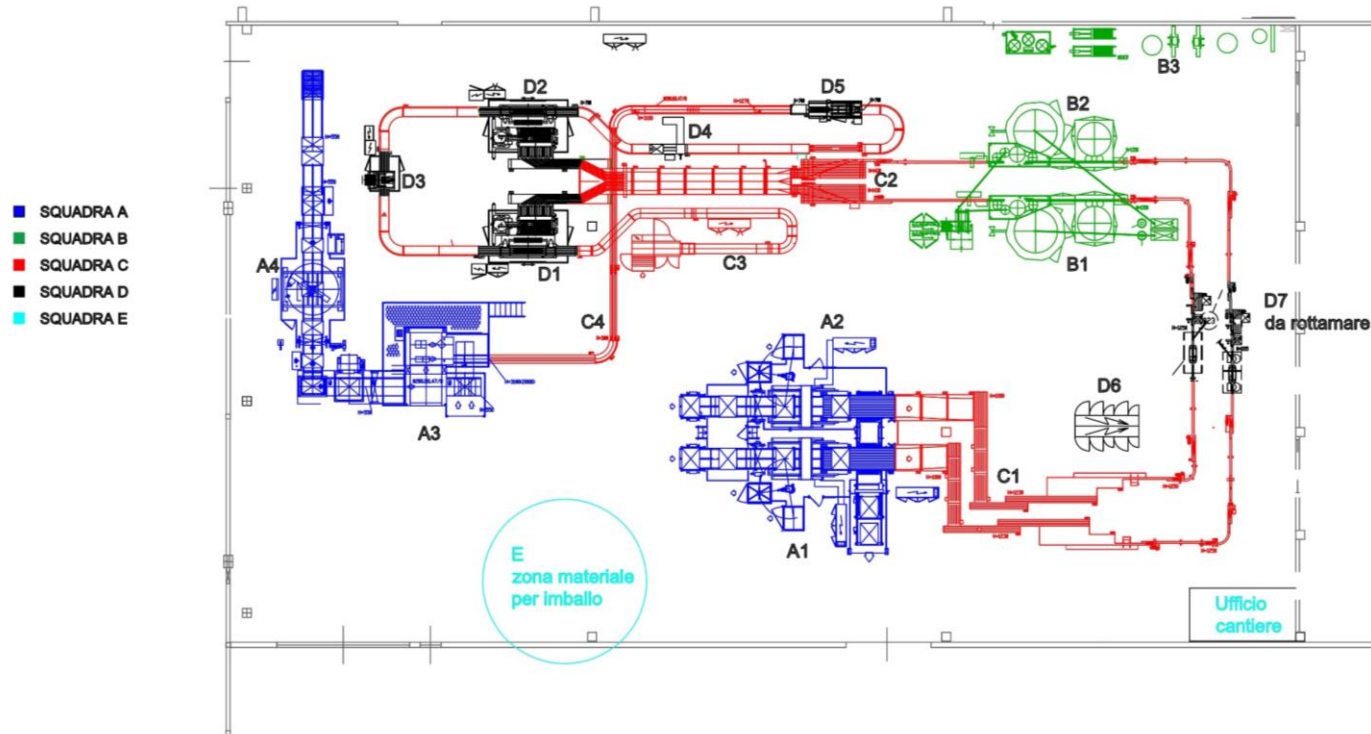
# MACHINERY DISMANTLING



On-site inspection for a preliminary assesment of the dismantling process

Machinery **measurements** and planning of the intervention-timing

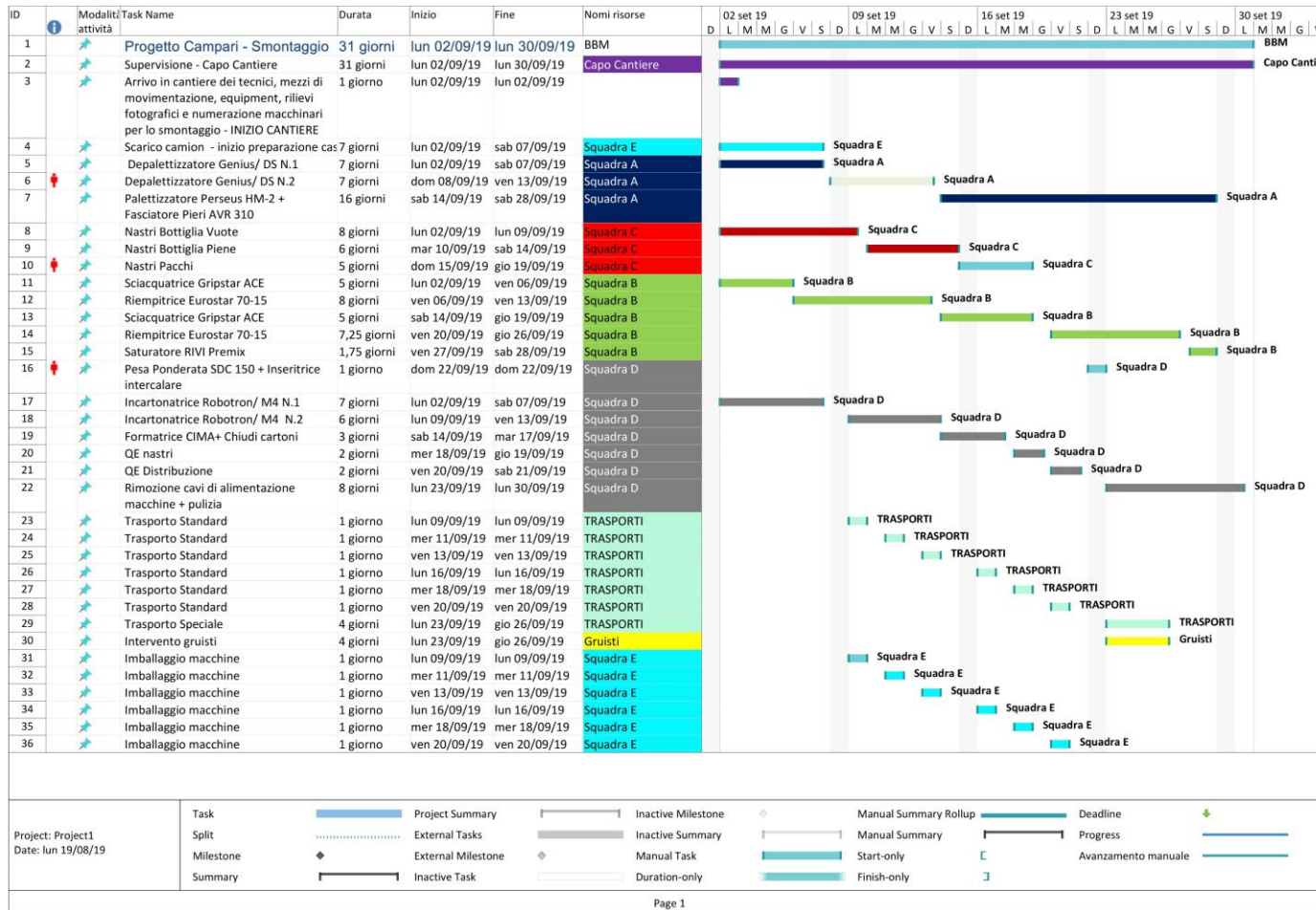
# INTERVENTION PRESENTATION



Separation of the several line components to better plan the intervention

PDS: Linea Crodo		
CLIENTE	RIF. Commessa	DATA 1:200
	Linea Crodo	DESEGNO U.C.
RIF. disegno		

# INTERVENTION TIMING PRESENTATION



Timing and tasks planning. We will share the GANT and a daily progress of work with the customer

# MACHINERY DISMANTLING



In every stage of the intervention, our highly-specialised technicians respect **all safety norms** of the worksite

# BUILDING OF TRANSPORT CASES



To ensure machinery while moving, our technicians realize sized transport cases that enable constant protection of the equipment



# LOADS FOR TRANSPORT



We rely on specialised partners for the transportation of the equipment.  
We guarantee the utmost reliability

# END OF THE INTERVENTION



We will leave the warehouse empty and tidy.  
All materials are correctly disposed according  
to existing norms

# SOME OF OUR CUSTOMERS

Here, some of the customers we carried out **conservative dismantling** for:



**THANK YOU.**

**BBM Service s.r.l.**

Via Pregalleno, 24  
24016 San Pellegrino Terme  
Bergamo | Italy

Tel +39 0345.23642  
E-mail: [info@bbmpackaging.com](mailto:info@bbmpackaging.com)  
**[bbmpackaging.com](http://bbmpackaging.com)**

