



COMPANY PRESENTATION

**THE GLOBAL  
SUSTAINABILITY**  
OF BBM SERVICE



# GLOBAL SUSTAINABILITY

BBM Service's commitment to sustainability in its most global meaning: **not only environmental, but also, social and for the community**

BBM Service considers attention to sustainability one of the primary objectives for its present and future agenda.

**The protection of the environment is an increasingly important prerogative for the packaging sector: we want to take this challenge** in pursuit of the Sustainable Development Goals promoted by the UN for 2030.

A commitment that does not translate only in interest in the ecosystem, but also, in a concrete responsibility to ensure the well-being of our employees in the workplace.

Environmental sustainability

Social sustainability

Supporting our territory



# ENVIRONMENTAL SUSTAINABILITY

For over 15 years, BBM Service has had as its mission to give a second life to machinery and bottling and packaging lines that are no longer in use.

**Our second-hand business guarantees environmental benefits due to the reduction in the disposal of heavy industrial material.**

- Even in corporate spaces, BBM has always been directed towards recycling. Sustainable initiatives such as adopting a blue #BBM branded cup or water dispenser, **in order to reduce the use of plastic among employees**, is one of the many small daily gestures that contribute to a greener vision of our workplaces



**SECOND-HAND  
MACHINERY**

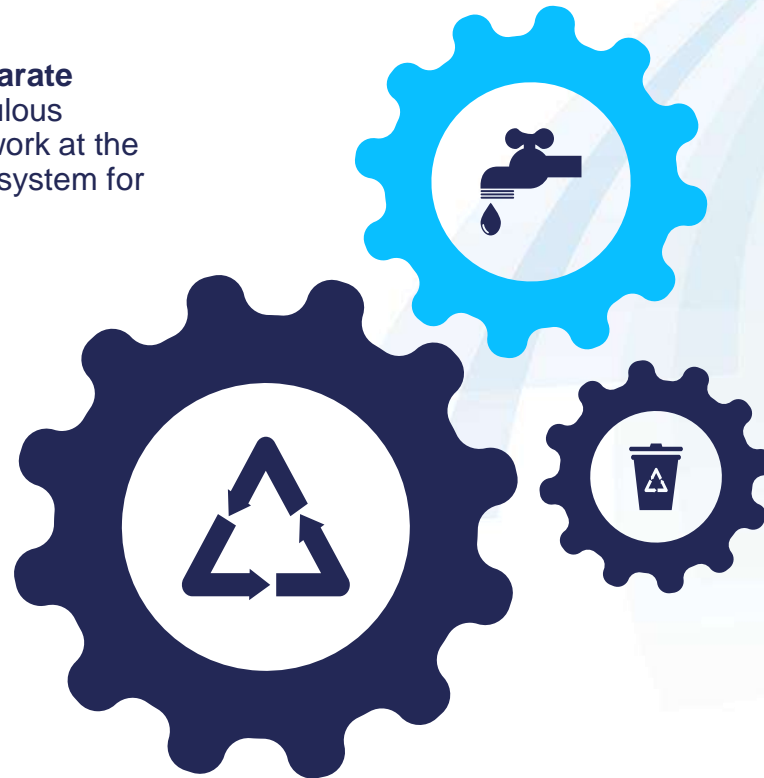
**LESS  
PLASTIC**

**PAPERLESS  
OFFICE**



# ENVIRONMENTAL SUSTAINABILITY

- Thanks to the increasingly important role of digital, our offices have now become paperless: **a philosophy to reduce the use of paper by reducing waste.**
- Our specialized technicians ensure **proper separate collection**, separating the materials with meticulous precision, according to the CER code. For the work at the customer's site, we have a suction and filtering system for fumes and dust.



# ENVIRONMENTAL SUSTAINABILITY

At the San Pellegrino hub, BBM has installed a photovoltaic system that consumes 90% of the energy produced; installation is also planned at the Lenna. In Lenna, **LED lamp bodies and a high-efficiency underfloor heating system have been installed to guarantee considerable savings compared to a traditional system.** In our car fleet, we select the latest generation and low emission vehicles.

# 90%

of the energy produced  
by solar panels is re-used



The rigor of our choices has allowed us to obtain recognition from the **EcoVadis** corporate sustainability assessment platform, and the opportunity to work with demanding realities in terms of commitment to the environment.

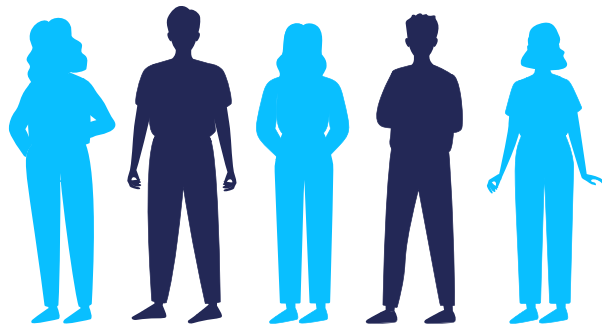


# SOCIAL SUSTAINABILITY

BBM wants and must be a place of well-being and fulfillment for its employees.

**We have always supported youth work, through active school-work programs.**

A corporate Code of Ethics has been prepared with the aim of defining the set of values and ethical principles that BBM Service recognizes, promotes, and shares. Commitments and responsibilities of BBM are aimed at **creating satisfaction for its customers and growth for employees and collaborators.**



## AN OPPORTUNITY FOR OUR STAFF



our full-time employees  
below 30 years of age

# 40%

We want the young people of our territory to have the opportunity to experience a path full of growth, expanding their knowledge and contributing to the active development of our valley.

**BBM Service supports the many employees engaged in a university training course, both three-year and master's, with contracts and facilities designed to meet the needs of our working students.**

women in  
managerial roles

# 60%

Of these, 80% are under the age of 35. We empower our employees to adopt flexible hours, with the aim of supporting a proper work-life balance



# SUPPORTING OUR TERRITORY

**WE PREFER LOCAL SUPPLIERS  
AND WE SUPPORT THE INITIATIVES OF OUR  
VALLEY**

**Among our suppliers, we have always preferred local companies for the promotion of a 0 km production chain.**

We like to support the community and competitive and amateur sports organizations, but also to small associations and local entities, and larger realities, such as the Comunità Montana Valle Brembana, as part of the Covid-19 health emergency.

**Our ten-year passion for sports has led us to want to actively support the Telethon foundation to promote scientific research.**





# THANK YOU



**BBM Service s.r.l.**

Via Pregalleno, 24  
24016 San Pellegrino Terme  
Bergamo | Italy

Tel +39 0345.23642

E-mail: [info@bbmpackaging.com](mailto:info@bbmpackaging.com)

**[bbmpackaging.com](http://bbmpackaging.com)**

