



*BUSINESS PRESENTATION*

**CONSERVATIVE  
DISMANTLING AND  
RELOCATION  
SERVICE**



# CONSERVATIVE DISMANTLING AND RELOCATION

Among the turnkey logistics engineering projects offered by BBM Service, one of the best-selling is **conservative dismantling**, which includes:

- Organization of lifting equipment and transport
- Planning and management of activities
- Possible preliminary engineering for line optimization
- Possible relocation and restart of the production line

## OUR ADVANTAGES

### TURNKEY SERVICES

BBM will take care of managing all the phases

### GUARANTEE

Of the quality of service and management of activities

### SHORT TIMES AND CERTAIN COSTS

precise timing planning of the intervention



# PHASE 1: INSPECTION



## Have a clear goal



we evaluate the customer's needs **with our specialized technical department, which will be able to give advice on timing, feasibility, and any upgrades**, always with the aim of recovering as much as possible from existing materials

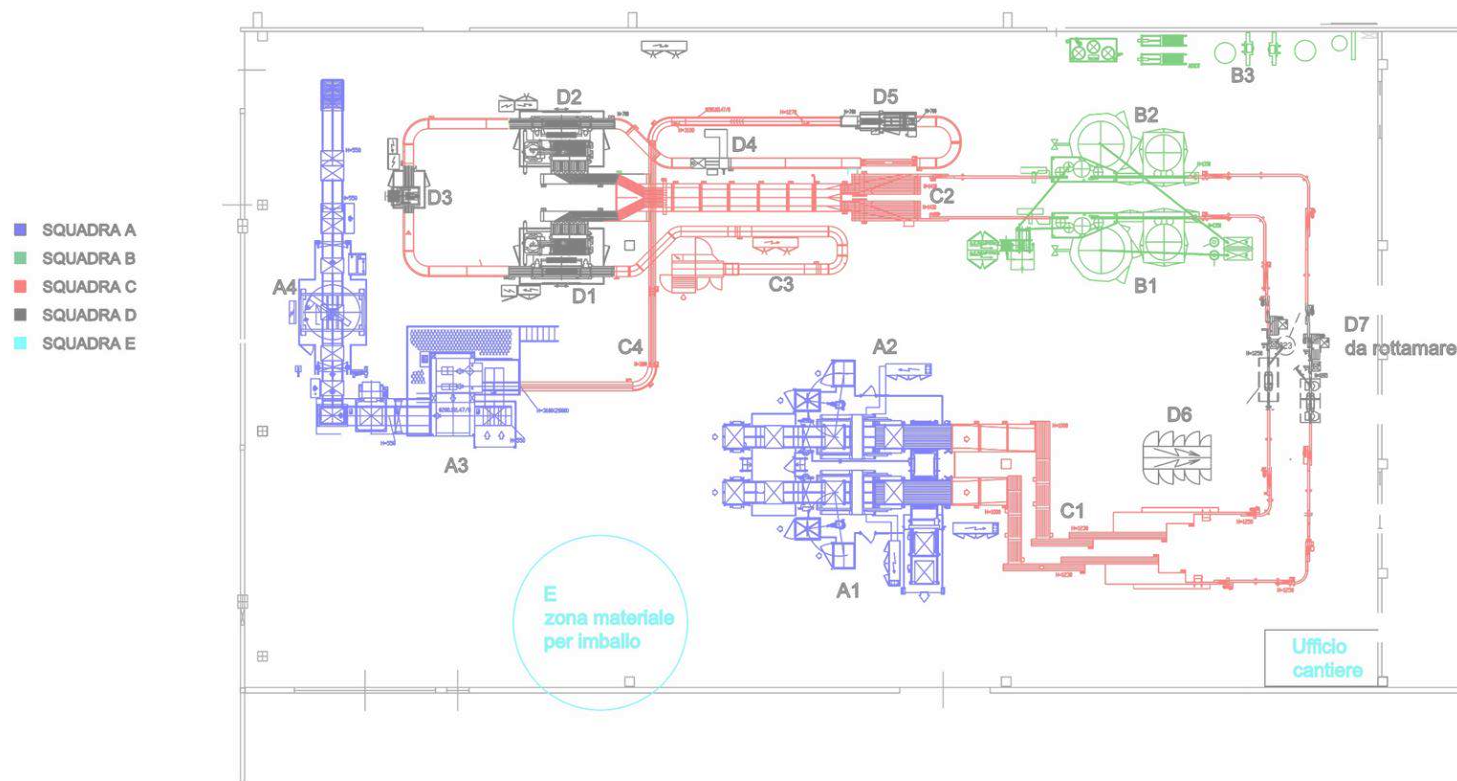
- **Inspection** for evaluations prior to disassembly
- **Machine measurements** and timing planning of intervention

# PHASE 2: PRESENTATION OF THE INTERVENTION

We divide the various components of the line to better plan the intervention to carry out; we share the Gantt with the customer and the forecasting of timing and resources needed

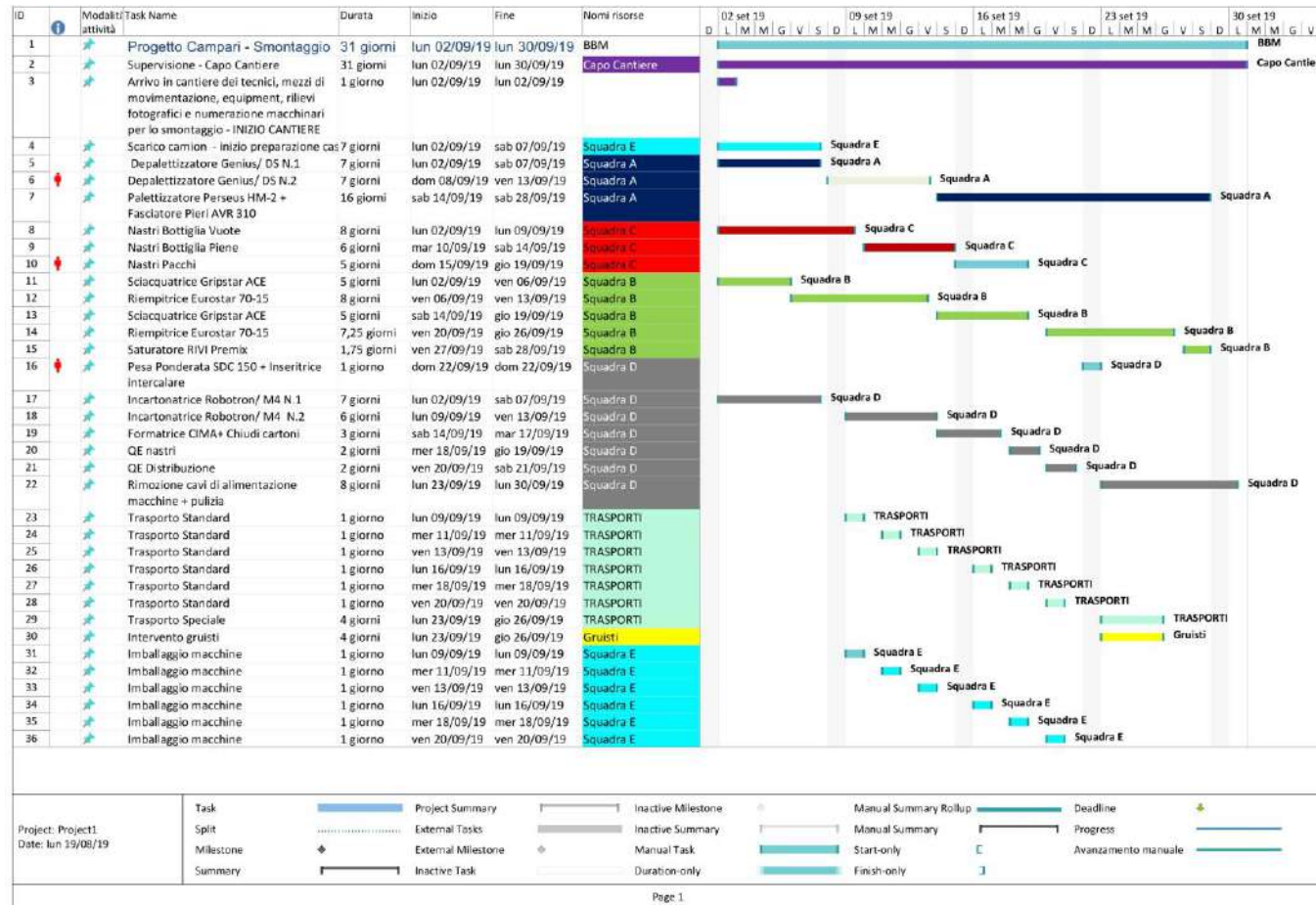
## Safety on site

we verify that all risk prevention measures are implemented, considering a series of critical issues, including the location of accesses, loading and unloading points, air filtration if in the presence of other working lines. **BBM designates a safety officer**



PTS:	Linea Crodo		
CLIENTE	RF. Connessa	SCA	1:200
	Linea Crodo	REDACTED	U.C.
	RF. disegno		
 BBM PACKAGING SOLUTIONS			

# STEP 2: TIMING PRESENTATION OF INTERVENTION



## STEP 3: DISMANTLING OF MACHINERY



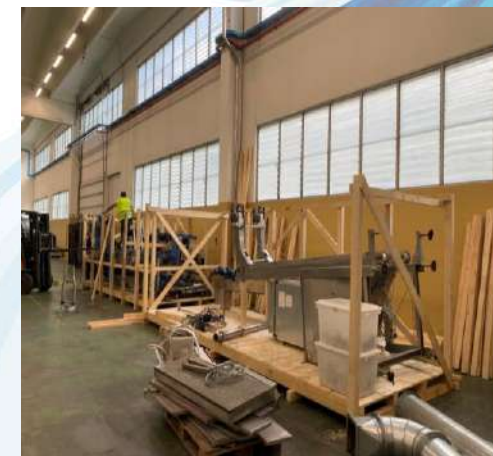
### Back-up and cataloguing

Before starting relocation, **all machinery and its components must be numbered and cataloged**. It is important to back up the software of the machinery, so as not to lose valuable data on PLC or changes made ad hoc

The dismantling of the machinery is carried out with rigor and respecting the safety standards



## STEP 4: CREATION OF TRANSPORT CRATES



### Organization of transport

BBM can organize the handling of the machinery of any weight and size; we personally take care of the **construction of the packaging and custom-made wooden cages** to minimize the means used for transport and allow the protection of the equipment.

**For transport, we rely on specialized partners to ensure maximum reliability**

# PHASE 5: EVICTION AND START-UP IN NEW LOCATION



We leave the shed completely clear and tidy. All materials are properly disposed of according to CER rules in force.



## Changes and upgrades

We take advantage of machine downtime in new locations or in our production spaces to overhaul worn components and upgrade for a more energy- and cost-efficient machine

## Start Up line in new location

The reassembly and start-up in the new headquarters is guaranteed within the time established with the customer. **Our technicians follow the testing entirely; we are specialized in the treatment of equipment used for the bottling of alcoholic beverages, implementing all the safety provisions on the subject**



# SAN MATTEO

Conservative relocation of 4 bottling lines in certain times,  
for moving the production site

## CUSTOMER NEED:

The customer needed a partner who would guarantee a turnkey service of conservative relocation of n.4 bottling lines in a short time

## BBM SOLUTION:

Once the keys of the shed have been handed over, BBM Service is responsible for dismantling and relocating four bottling lines in a completely autonomous way; specifically, two glass bottling lines, a PET line and a plastic line. Always with the aim of recovering as much as possible from existing materials, **BBM has carried out an engineering layout study to optimize the new production plant in Altavilla, in the province of Vicenza. In less than a month, BBM delivered the turnkey relocation service.** The customer then relied on the expertise of BBM Service for engineering operations such as format changes, maintenance and supply of used and reconditioned machinery.



# Relocation of n.3 Sanpellegrino lines

## Conservative dismantling for production renewal

### CUSTOMER NEED:

The dismantling of three lines, whose nominal capacity was 50,000 bottles per hour, for a total of over 100 machines distributed over an area of 6700 square meters

**PREMISES:** Among the main logistical obstacles, the positioning of the machinery: some were located on a mezzanine, while others were on an embankment, making handling operations complex. The unstoppable activity in the adjacent production has made it essential to adopt systems for the extraction of fumes and dust

### BBM SOLUTION:

In just one month, **BBM Service's technical staff catalogued, disassembled and moved a hundred machines.** Some have been moved to the Lenna showroom, where they will be overhauled to provide the latest generation of services, while obsolete machinery will be dismantled.

In total, the operation required **more than 50 BBM technicians** to work simultaneously. During the execution, 6 to 8 trucks a day were moved between San Pellegrino Terme and Lenna.

The result is a clean and free shed, ready and already available for the installation of new bottling lines.



# S.I.A.MI Spa – Società Italiana Acque Minerali

Conservative dismantling for production upgrade

## CUSTOMER NEED:

Find a partner that would guarantee conservative disassembly in a short and certain time for production renewal needs

## BBM SOLUTION:

For the customer, we carried out a conservative dismantling of their UNIVERSAL MONOBLOCK COMBI SIDEL, at their plant in Cerreto di Spoleto, in the province of Perugia.

Following a preliminary inspection by our specialized technicians, BBM has completely dismantled the machinery in just one week. The subsequent dismantling phases were articulated as follows: presentation of the timing of intervention, dismantling of the machinery, sharing with the customer of a constant updating of the work, including the transport of materials organized with special packaging systems

The particular attention to sustainability has oriented us towards the decision to reuse all or part of the existing machinery. After careful analysis, the machine was transported to our factory in Lenna (BG), where it was completely overhauled for resale. A win-win solution to guarantee the customer a quick eviction of the production premises and at the same time propose a used but refurbished machine, with a view to sustainability and the fight against waste. The machine is already available for viewing at our showroom in Lenna (BG).



# Nestlé PURINA

Conservative Relocation: from France to Italy,  
the logistics challenge of BBM Service

## CUSTOMER NEED:

Purina needed a partner to take care of the conservative dismantling of machinery and equipment at the Montfort plant in the south of France; the disassembled equipment would then be stationed in a warehouse to be overhauled and updated, before being moved again at the Purina plant in Portogruaro, in the province of Venice.

## BBM SOLUTION:

In a few days, BBM specialized technicians carried out the conservative dismantling at the French plant of a series of machines used for packaging. The dismantling was managed by BBM following all the safety rules of the case. BBM then managed the logistics operations for the transport at the Lenna showroom.

The large space of our warehouse has allowed the customer to use it to carry out the start-up and verification of the machines and a series of special upgrades. Colorsolution, a company of excellence connected to BBM Service, has taken care of giving new life to the machinery by painting some visible components. The overhauled machines were then transported to the Portogruaro plant for final installation.



## SOME OF OUR CUSTOMERS



**Coca-Cola HBC**  
Italia





# THANK YOU.

**BBM Service s.r.l.**

Via Pregalleno, 24  
24016 San Pellegrino Terme  
Bergamo | Italy

Tel +39 0345.23642

E-mail: [info@bbmpackaging.com](mailto:info@bbmpackaging.com)

**[bbmpackaging.com](http://bbmpackaging.com)**