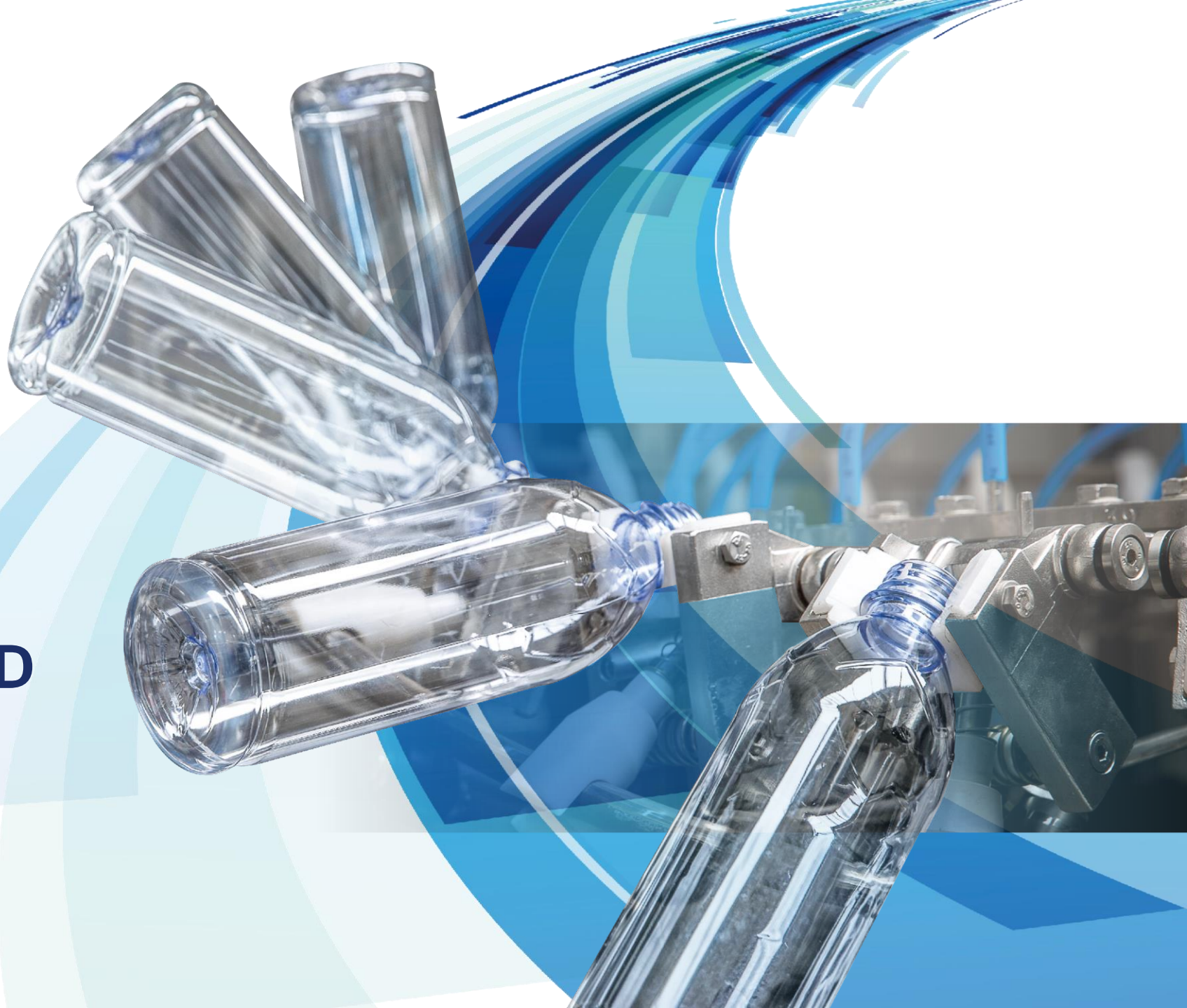




COMPANY PRESENTATION

**CONSERVATIVE
DISMANTLING AND
RELOCATION
SERVICE**



CONSERVATIVE DISMANTLING AND RELOCATION

Among the turnkey logistics engineering projects offered by BBM Service, one of the best-selling is **conservative dismantling**, which includes:

- Organization of lifting equipment and transport
- Planning and management of activities
- Possible preliminary engineering for line optimization
- Possible relocation and restart of the production line

OUR ADVANTAGES

TURNKEY SERVICES

BBM will take care of managing all the phases

GUARANTEE

Of the quality of service and management of activities

SHORT TIMES AND CERTAIN COSTS

precise timing planning of the intervention



STEP 1: INSPECTION



Have a clear goal



we evaluate the customer's needs with our specialized technical department, which will be able to give advice on timing, feasibility, and any upgrades, always with the aim of recovering as much as possible from existing materials

- **Inspection** for evaluations prior to disassembly
- **Machine measurements** and timing planning of intervention

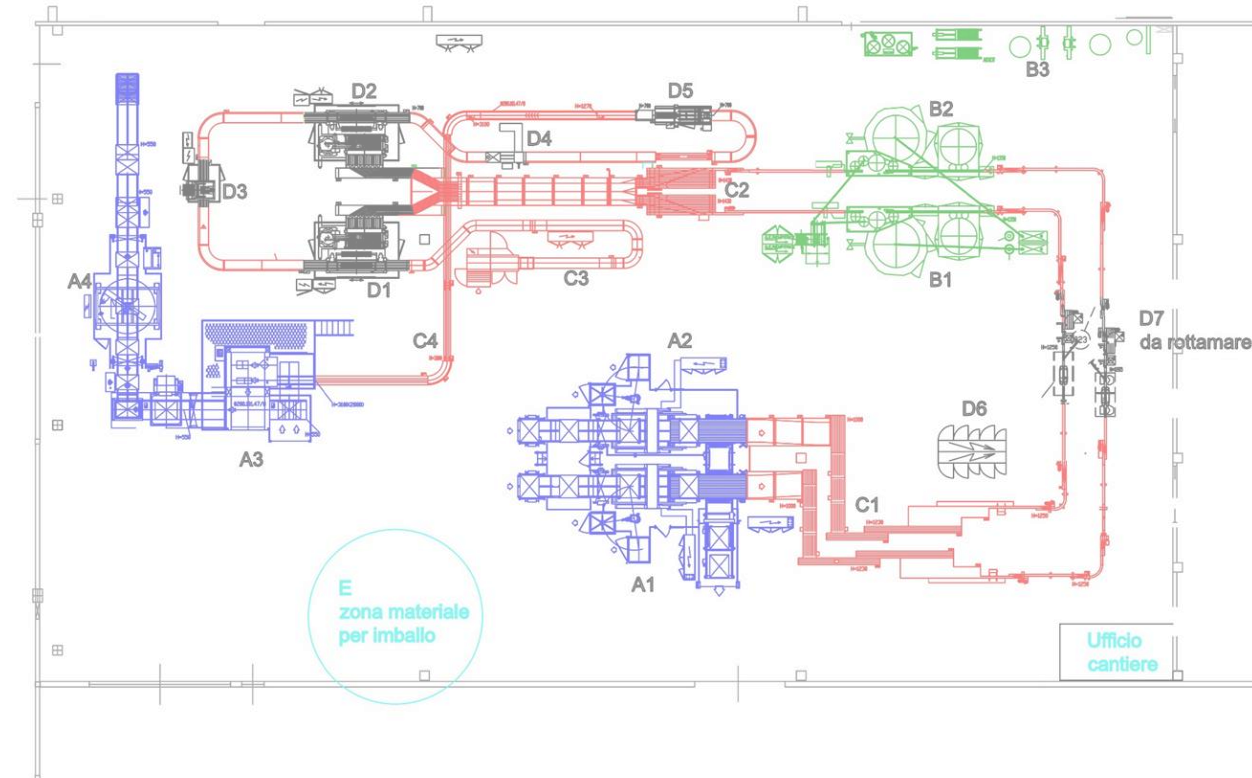
STEP 2: PRESENTATION OF THE INTERVENTION

We divide the various components of the line to better plan the intervention to carry out; we share the Gantt with the customer and the forecasting of timing and resources needed

Safety on site

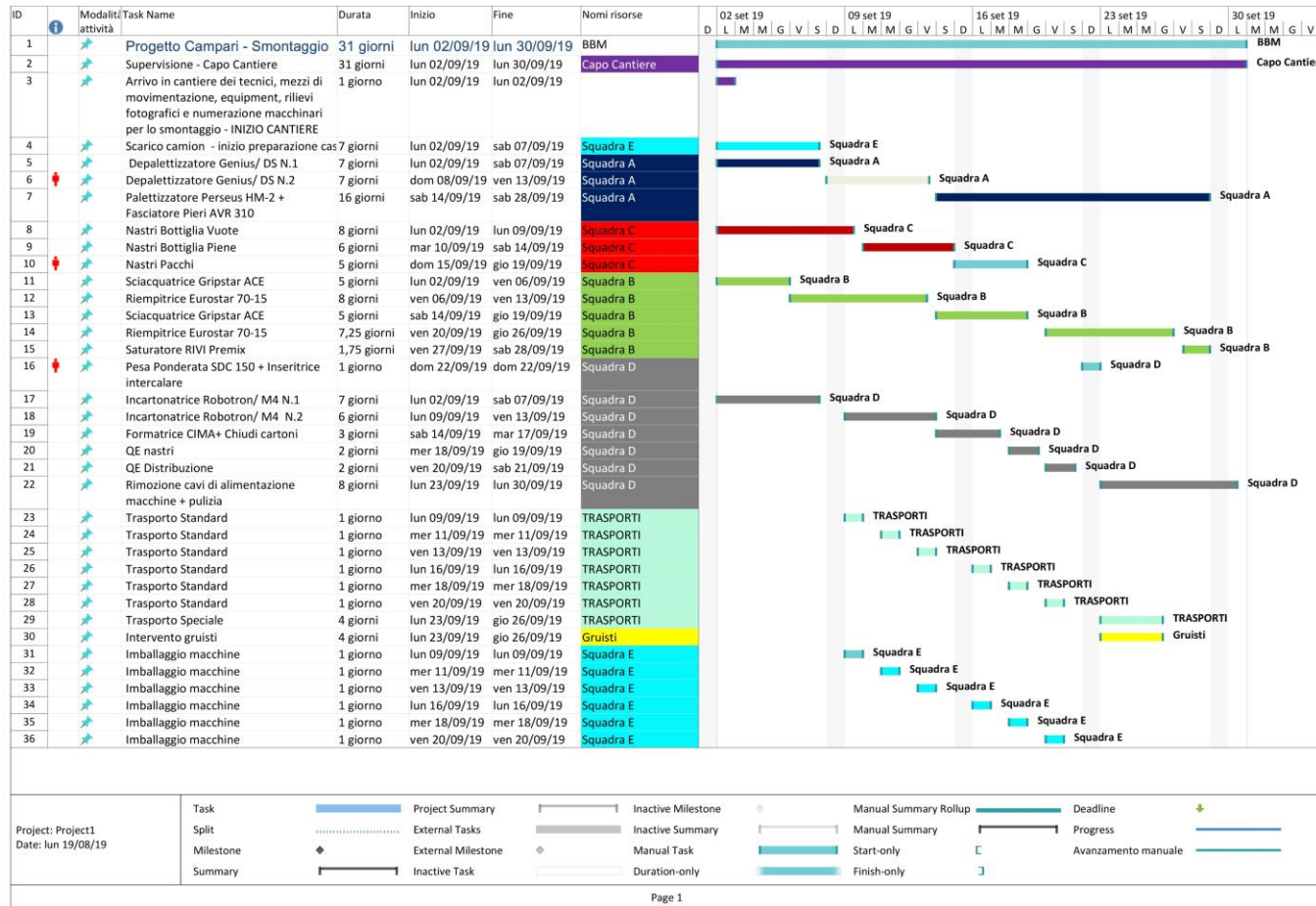
we verify that all risk prevention measures are implemented, considering a series of critical issues, including the location of accesses, loading and unloading points, air filtration if in the presence of other working lines. **BBM designates a safety officer**

- SQUADRA A
- SQUADRA B
- SQUADRA C
- SQUADRA D
- SQUADRA E



PDS: Linea Crodo		
CLIENTE	RIF. Commessa	SCALA 1:200
	Linea Crodo	DESSINI U.C.
RIF. disegno		
		<small>PROSPETTIVE ESEMPLIFICATE IN 3 UNITA' PER LE ASSICURAZIONI E 1 ESEMPLARE PER LE AZIENDE DEL CLIENTE. PER INFORMAZIONI E PER LE CONDIZIONI DI VENDITA, SI INVITA IL CLIENTE A CONSULTARE IL MANUALE DI RIFERIMENTO. PER LE CONDIZIONI DI VENDITA, SI INVITA IL CLIENTE A CONSULTARE IL MANUALE DI RIFERIMENTO. PER LE CONDIZIONI DI VENDITA, SI INVITA IL CLIENTE A CONSULTARE IL MANUALE DI RIFERIMENTO.</small>

STEP 2: TIMING



STEP 3: DISMANTLING OF MACHINERY



Back-up and cataloguing

Before starting relocation, **all machinery and its components must be numbered and cataloged**. It is important to back up the software of the machinery, so as not to lose valuable data on PLC or changes made ad hoc

The dismantling of the machinery is carried out with rigor and respecting the safety standards



STEP 4: CREATION OF TRANSPORT CRATES



Organization of transport

BBM can organize the handling of the machinery of any weight and size; we personally take care of the **construction of the packaging and custom-made wooden cages** to minimize the means used for transport and allow the protection of the equipment.

For transport, we rely on specialized partners to ensure maximum reliability

STEP 5: EVICTION AND START-UP IN NEW LOCATION



We leave the shed completely clear and tidy. All materials are properly disposed of according to CER rules in force.



Changes and upgrades

We take advantage of machine downtime in new locations or in our production spaces to overhaul worn components and upgrade for a more energy- and cost-efficient machine

Start Up line in new location

The reassembly and start-up in the new headquarters is guaranteed within the time established with the customer. **Our technicians follow the testing entirely; we are specialized in the treatment of equipment used for the bottling of alcoholic beverages, implementing all the safety provisions on the subject**

SOME OF OUR CUSTOMERS



THANK YOU.

BBM Service s.r.l.

Via Pregalleno, 24
24016 San Pellegrino Terme
Bergamo | Italy

Tel +39 0345.23642

E-mail: info@bbmpackaging.com

bbmpackaging.com

